

# PARENT

## METAL PRODUCTS



Manufacturing High Quality  
Steel Equipment  
Since 1921

Storage Cabinets . . . . .	2-5
XHD Shelving . . . . .	5
File Storage . . . . .	6
Desks . . . . .	6
Computer Cabinets . . . . .	7
Bookcases & Stock Carts . . . . .	8
Lockers . . . . .	9
Benches . . . . .	10-15
Wall Cabinets . . . . .	15
Shop Desks . . . . .	16
Mobile Shop Cabinets . . . . .	17
Shelf Trucks . . . . .	17
Bins & Shelving . . . . .	18-24



172-S

## Storage Cabinets

- All set-up, ready to use.
- Full height piano hinges.
- Shelves adjustable on 2" centers.
- Triple flanged shelves for extra strength.
- Full 1" thick pan reinforced doors.
- Ledge cornice top.
- Three point locking device with plated locking bars.
- Two handles on double door cabinets (1-Fixed, 1-Locking, 2-Keys)



142-S

### Standard Cabinets

SHELF CAPACITY 200 LBS. EVENLY DISTRIBUTED

MODEL NO.	SIZE (W x D x H)	NO. OF OPENINGS
142-S	36" x 18" x 42"	3
242-S	36" x 24" x 42"	3
172-S	36" x 18" x 72"	5
272-S	36" x 24" x 72"	5
178-S	36" x 18" x 78"	5
278-S	36" x 24" x 78"	5

#### WARDROBE WITH HAT SHELF & COAT ROD

172-W	36" x 18" x 72"
272-W	36" x 24" x 72"
178-W	36" x 18" x 78"
278-W	36" x 24" x 78"

#### COMBINATION WITH HAT SHELF, 3 ADJUSTABLE SHELVES, DIVIDING PARTITION & COAT ROD

172-C	36" x 18" x 72"
272-C	36" x 24" x 72"
178-C	36" x 18" x 78"
278-C	36" x 24" x 78"



172-C



178-W



217-C



427-S

Heavy Duty  
48" wide  
Storage Cabinet

### Heavy Duty Cabinets

SHELF CAPACITY 400 LBS. EVENLY DISTRIBUTED

MODEL NO.	SIZE (W x D x H)	NO. OF OPENINGS
217-S	24" x 18" x 78"	5
227-S	24" x 24" x 78"	5
317-S	36" x 18" x 78"	5
327-S	36" x 24" x 78"	5
427-S	48" x 24" x 78"	5

#### WARDROBE WITH HAT SHELF & COAT ROD

217-W	24" x 18" x 78"
227-W	24" x 24" x 78"
317-W	36" x 18" x 78"
327-W	36" x 24" x 78"
427-W	48" x 24" x 78"

#### COMBINATION WITH HAT SHELF, 3 ADJUSTABLE SHELVES, DIVIDING PARTITION & COAT ROD

217-C	24" x 18" x 78"
227-C	24" x 24" x 78"
317-C	36" x 18" x 78"
327-C	36" x 24" x 78"
427-C	48" x 24" x 78"

# Mobile Storage Cabinets

## Great for Mobile Storage

- Heavy duty 5" solid rubber casters (2-rigid and 2-swivel with brake).
- All set up and ready to use.
- Full height piano hinges for strength and security.
- Shelves adjust on 2" centers.
- Three point locking device with two handles.
- Lateral file is factory installed with full extension slides and will accommodate hanging files.
- Optional push handle available.



242-LF-CT



260-LF-CT

MODEL NO.	SIZE (W x D x H)	DESCRIPTION
142-S-CT	36" x 18" x 48"	2- Adjustable Shelves
142-LF-CT	36" x 18" x 48"	2- Adjustable shelves & lateral file
242-S-CT	36" x 24" x 48"	2- Adjustable Shelves
242-LF-CT	36" x 24" x 48"	2- Adjustable shelves & lateral file
260-S-CT	36" x 24" x 66"	3- Adjustable Shelves
260-LF-CT	36" x 24" x 66"	3- Adjustable Shelves & lateral file



260-S-CT



242-S-CT

## Janitorial Cabinet

- All of the features of our mobile cabinets.
- Large, roomy cabinet for storage of maintenance and cleaning supplies.
- Also available without casters (272-J 36" x 24" x 72").

MODEL NO.	SIZE (W x D x H)	DESCRIPTION
272-J-CT	36" x 24" x 78"	3- Adjustable Shelves



272-J-CT

### Lateral File Only #31LF

- File Drawer has full extension drawer slides and will accommodate hanging files. Available factory installed in any of our 36" wide cabinets.

### Caster Tray Only

- Heavy Duty Caster Tray easily converts all of our 36" & 48" wide cabinets into mobile cabinets.
- Each tray includes 2 rigid & 2 swivel w/brake 5" solid rubber casters.
- **CT-18** for cabinets 36" wide & 18" deep.
- **CT-24** for cabinets 36" wide & 24" deep.
- **CT-48** for cabinets 48" wide & 24" deep.



172-SGD

## Visual Storage Cabinets

- Great cabinet for supplies when security and visibility are necessary.
- Doors are 16 gauge with full height piano hinges and shatterproof acrylic panels.
- Two handles provided (1 locking, 1 fixed), furnished with 2 keys.
- Three point locking device with plated locking bars.
- Shelves adjust on 2" centers.
- Ledge cornice top.
- Durable powder coat finish.
- Available in light gray and champagne.

### Visual Storage Cabinets

MODEL NO.	SIZE (W x D x H)	SHELF CAPACITY
172-SGD	36" x 18" x 72"	200 lbs.
272-SGD	36" x 24" x 72"	200 lbs.

### Heavy Duty Visual Cabinets

#### WITH EXPANDED METAL DOORS

3172-SED	36" x 18" x 72"	400 lbs.
3272-SED	36" x 24" x 72"	400 lbs.



278-BFD

## Combination Cabinet

- 36" w x 24" d x 78" h
- Features rugged Drawer Unit with 1- File drawer & 1- Box drawer.

## Heavy Duty Visual Storage Cabinets

- Excellent cabinet when ventilation, security, and visibility are important.
- Also good as a drying cabinet for ceramics.
- Can be converted into combination wardrobe-storage cabinet.
- Doors are 16 gauge with expanded metal fronts and full height piano hinges.
- Shelves are 18 gauge with a 400 lbs. capacity each and adjustable on 2" centers.
- Three point locking device with plated locking bars.
- Two handles provided (1 locking, 1 fixed), furnished with 2 keys.
- Available in Light Gray and Blue.



3172-SED

**All Units Shipped Set-up & Ready to Use!**

## XHD Series

- Reinforced doors with full piano hinges and 3 point locking device.
- Optional fork lift base allows ease in moving loaded cabinet.
- Galvanized shelves for a long lasting durable finish that are scratch, oil and chemical resistant (800 lbs. capacity per shelf).
- Cabinets are rugged all welded construction made from 14 and 16 gauge steel.
- Cabinets are stocked in high visible precaution blue which is an electrostatically applied powder coated finish.
- Available in four sizes.



## Louvered Panel

MODEL NO.	SIZE (W x H)
36SLP	36" x 18"

- Excellent for hanging plastic bins.
- Available factory installed in any of our 36" wide cabinets.



MODEL NO.	SIZE
XHD-3142	(36"W x 18"D x 42"H)
XHD-3242	(36"W x 24"D x 42"H)
XHD-3178	(36"W x 18"D x 78"H)
XHD-3278	(36"W x 24"D x 78"H)
XHD-FB18	(18" Fork Lift Base)
XHD-FB24	(24" Fork Lift Base)

Fork lift base adds 4" to height of cabinet.

## 14 Gauge Shelving

- Parent EXTRA HEAVY DUTY SHELVING is ideal for storing dies, hardware kegs, castings, or other heavy items.
- 14 gauge shelves are 2" thick and flanged for extra strength.
- Posts are 2" x 2" x 11 gauge angles, punched on 1" centers.
- All units standard with four shelves, extra shelves available.

### Shelving

MODEL NO.	SIZE (WxD)	CAP. PER SHELF
<b>75" HIGH</b>		
XR4818-6	48" x 18"	1750 lbs.
XR4824-6	48" x 24"	1750 lbs.
XR6018-6	60" x 18"	1500 lbs.
XR6024-6	60" x 24"	1500 lbs.
<b>99" HIGH</b>		
XR4818-8	48" x 18"	1750 lbs.
XR4824-8	48" x 24"	1750 lbs.
XR6018-8	60" x 18"	1500 lbs.
XR6024-8	60" x 24"	1500 lbs.
<b>EXTRA SHELVES</b>		
XS4818	48" x 18"	1750 lbs.
XS4824	48" x 24"	1750 lbs.
XS6018	60" x 18"	1500 lbs.
XS6024	60" x 24"	1500 lbs.





4433

## File Storage Cabinet

This adaptable cabinet provides the most efficient use of storage space. Three file drawers have full height sides to accommodate hanging files. Cabinet includes 2 adjustable shelves. Comes standard with locks. Ships fully assembled and ready for use. 36" wide x 18" deep x 42" high.

## Desks

- Two 6 in. box drawers.
- All drawers have full extension drawer slides, rated at 125 lbs. per drawer.
- Three file drawers with full height sides to accommodate hanging files.
- 1.25 in. thick, high pressure laminate tops with backing sheet.
- Ergonomic flush drawer pulls with built-in locks.
- Durable powder coated finish.
- Pedestals are welded construction with leveling glides.
- Optional locking center drawer.
- Optional pull-out side shelf, for additional work surface.
- Optional wire management hole with grommet.



### Heavy Duty Desks

MODEL NO.	SIZE (W x D)
TPD-6024	60" x 24"
TPD-7224	72" x 24"
TPD-6030	60" x 30"
TPD-7230	72" x 30"

## Laptop Storage Cart

- Mobile storage for 24 laptops or 48 tablets.
- Heavy duty all welded construction, setup, ready to use.
- 16 gauge expanded metal doors provide excellent security, visibility and ventilation when storing or charging.
- Three point locking device.
- 6 – 3" wire management holes in rear for power cords.
- Rubber mat on top with 2 push handles.
- Moves easily on 5" casters, (2 – rigid, 2 – swivel with brakes).
- Size: 36" w x 24" d x 48" h.
- **UE800SB** outlet strip – 8 outlets, lighted on/off switch, resettable circuit breaker and 6 foot cord.



242-LTE



242-LTE  
Back View

(Shown with 3 optional outlet strips)

## Mobile Computer Cabinet

- Lateral file drawer (with full extension drawer slides) will accommodate hanging files.
- Both keyboard tray and printer shelf are equipped with heavy-duty pull out slides.
- Two shelves adjustable on 2" centers.
- Two handles with three point locking.
- Pan reinforced doors with full height piano hinges.
- Heavy duty 5" swivel casters with brakes.
- 3" wire management hole in back of cabinet for cords and ventilation.
- 36" w x 24" d x 78" h (overall with casters).



272-MCC



## Bookcases

- All set-up, ready to use.
- Rugged construction for any office or classroom environment.
- Designed to utilize storage space.
- Shelves adjustable on 2" centers.
- Ledge cornice top.

MODEL	SIZE (W x D x H)	NO. OF OPENINGS
293	36" x 12" x 29"	2
423	36" x 12" x 42"	3
543	36" x 12" x 54"	4
723	36" x 12" x 72"	5
843	36" x 12" x 84"	6
2938	36" x 18" x 29"	2
4238	36" x 18" x 42"	3
5438	36" x 18" x 54"	4
7238	36" x 18" x 72"	5
8438	36" x 18" x 84"	6

## Mobile Bookcases

With many of the same features as our standard bookcases, these are perfect for storing and moving books, binders, tapes and other supplies. Shelves adjustable on 2" centers. Furnished with 2 rigid and 2 swivel with brake casters.



### Mobile Bookcases

MODEL NO.	SIZE (W x D x H)	OPENINGS
BC-3518	36" x 18" x 35"	2
BC-4818	36" x 18" x 48"	3
BC-6018	36" x 18" x 60"	4



## Stock Carts

### INDUSTRIAL – 750 LB. CAPACITY

#### 740-1630 – STOCK CART

Overall size is 16" x 30" x 32" high, including casters. Casters are 5" diameter with solid rubber tires for quiet operation. Trays have 3.25" flanges to prevent contents from sliding off. Ideal for any work requiring a compact, easily maneuvered carrier. Standard gray finish; shipped knocked down.

#### 740-2436 – STOCK CART

Same as above, except overall size is 24" x 36" x 32" high, including casters.

NOTE: Intermediate tray available on both models.



# All Steel, All Set Up Lockers

- Attractive styling that fits into any office environment, yet rugged enough for factory use.
- Can be used individually or bolted together in groups.
- Built in padlock hasps for security.
- Full height piano hinges for years of use.
- Single locker is furnished with two coat hooks and hat shelf.
- Double tier locker has two compartments each with 2 coat hooks.
- All set-up, ready to use — just remove from carton.
- Light gray finish.
- Doors are 18 gauge, housing and top are 22 gauge and bottom is 20 gauge.
- Visual lockers are excellent when visibility, ventilation & security are important.



2872-2

2872-1

2872-6

2860-4

2860-1



2872-6M

Shown with Optional Coat Rod Kit

MODEL NO.	NUMBER OF COMPARTMENTS	OVERALL DIMENSIONS	COMPARTMENT SIZE
2860-1	1	12.25"W x 18"D x 60"H	12"W x 18"D x 56"H
2860-4	4	12.25"W x 18"D x 60"H	12"W x 18"D x 14"H
2872-1	1	12.25"W x 18"D x 72"H	12"W x 18"D x 68"H
2872-2	2	12.25"W x 18"D x 72"H	12"W x 18"D x 34"H
2872-6	6	12.25"W x 18"D x 72"H	12"W x 18"D x 11"H
<b>VISUAL DOOR LOCKERS</b>			
2872-6M	6	12.25"W x 18"D x 72"H	12"W x 18"D x 11"H
<b>COAT ROD KIT</b>			
CRK-24	Coat Rod Kit	Two 24" Coat Rods	

## Hydraulic Ergonomic Benches...

- Easy adjustment of work height from 30.75" to 42.75"
- Infinite adjustment with a capacity of 750 lbs.
- All steel components are heavy duty 14 gauge.
- 12" deep lower shelf/footrest standard with basic bench.
- Optional accessories: cantilever light and shelf, top shelf and bench drawer.
- Tops available: non-glare white high density plastic laminate, maple, steel and conductive (anti-static).



### PLASTIC

MODEL	SIZE (W x D)
HB-4830-P	48" x 30"
HB-6030-P	60" x 30"
HB-7230-P	72" x 30"

### MAPLE

MODEL	SIZE (W x D)
HB-4830-W	48" x 30"
HB-6030-W	60" x 30"
HB-7230-W	72" x 30"

### STEEL

MODEL	SIZE (W x D)
HB-4829-S	48" x 29"
HB-6029-S	60" x 29"
HB-7229-S	72" x 29"

*...infinite adjustment with  
a capacity of 750 lbs.*

# AP Series Electronic Workstations

- The best value in ergonomic assembly benches.
- Heavy duty all welded 14 gauge legs—adjustable from 31" to 35" high— complete with leveling glides.
- Non-glare white top with high density plastic laminate and backing sheet.
- ESD tops available.
- 14 gauge aprons front and rear eliminate top deflection.
- Standard sizes are 48", 60" and 72" wide; 30" deep.



## AP Series Work Benches

### Basic Bench: Plastic Laminate Top, Adjustable Legs w/Glides, Aprons & Stringer

#### MODEL NO.

AP-4830	48" W x 30" D
AP-6030	60" W x 30" D
AP-7230	72" W x 30" D

#### ACCESSORIES

#### MODEL NO.

6016-4	Backboard - 48" W, Extends 3" above back of bench
6016-5	Backboard - 60" W, Extends 3" above back of bench
6016-6	Backboard - 72" W, Extends 3" above back of bench

#### MODEL NO.

CTS-4	Cantilever Shelf w/ 24"H Uprights - 48"W x 12"D
CTS-5	Cantilever Shelf w/ 24"H Uprights - 60"W x 12"D
CTS-6	Cantilever Shelf w/ 24"H Uprights - 72"W x 12"D

#### MODEL NO.

LF-4	38"H Uprights w/ 48" Light Fixture - 48"W
LF-5	38"H Uprights w/ 48" Light Fixture - 60"W
LF-6	38"H Uprights w/ 48" Light Fixture - 72"W

#### MODEL NO.

CTS-LF-4	Cantilever Shelf and Light with 38"H Uprights
CTS-LF-5	Cantilever Shelf and Light with 38"H Uprights
CTS-LF-6	Cantilever Shelf and Light with 38"H Uprights

#### MODEL NO.

BR-4	Adjustable Bin Rail - 48"W
BR-5	Adjustable Bin Rail - 60"W
BR-6	Adjustable Bin Rail - 72"W

#### MODEL NO.

6027-4	Lower Shelf/Footrest - 48"W x 12"D
6027-5	Lower Shelf/Footrest - 60"W x 12"D
6027-6	Lower Shelf/Footrest - 72"W x 12"D

#### MODEL NO.

UL401BC	48" Outlet Strip with 8 Outlets, Lighted On/Off Switch, Circuit Breaker and 6' Cord and Plug
---------	--

#### MODEL NO.

1420	With Mounting Kit - Single Tier Drawer 14"W x 20"D x 6"H
822BF	With Mounting Kit - Hanging Pedestal w/ One Box & One File Drawer - 14.25"W x 22"D x 18.5"H

# Adjustable Height Channel Leg Benches

Heavy duty construction throughout; legs, stringers, shelves, backboards and end pieces are 14 gauge. Steel tops are 12 gauge. Channel legs available with glides for uneven floors and casters for mobile benches. Steel parts standard in gray finish. Tops stocked in plastic (non-glare white), conductive (anti-static), 12 gauge steel and wood. Shipped knocked down. Bench height adjusts from 30.75" to 34.75".

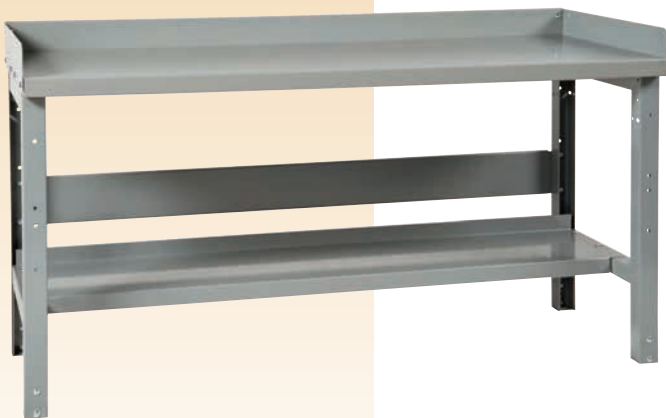


## 800

LENGTH	DEPTH	WORKING SURFACE		
		STEEL	PLASTIC	WOOD
4'	24"	800-S-424	800-P-424	800-W-424
5'	24"	800-S-524	800-P-524	800-W-524
6'	24"	800-S-624	800-P-624	800-W-624
4'	30"	800-S-429	800-P-430	800-W-430
5'	30"	800-S-529	800-P-530	800-W-530
6'	30"	800-S-629	800-P-630	800-W-630
4'	36"	800-S-436	800-P-436	800-W-436
5'	36"	800-S-536	800-P-536	800-W-536
6'	36"	800-S-636	800-P-636	800-W-636

## 803

LENGTH	DEPTH	WORKING SURFACE		
		STEEL	PLASTIC	WOOD
4'	24"	803-S-424	803-P-424	803-W-424
5'	24"	803-S-524	803-P-524	803-W-524
6'	24"	803-S-624	803-P-624	803-W-624
4'	30"	803-S-429	803-P-430	803-W-430
5'	30"	803-S-529	803-P-530	803-W-530
6'	30"	803-S-629	803-P-630	803-W-630
4'	36"	803-S-436	803-P-436	803-W-436
5'	36"	803-S-536	803-P-536	803-W-536
6'	36"	803-S-636	803-P-636	803-W-636



## 806

LENGTH	DEPTH	WORKING SURFACE		
		STEEL	PLASTIC	WOOD
4'	24"	806-S-424	806-P-424	806-W-424
5'	24"	806-S-524	806-P-524	806-W-524
6'	24"	806-S-624	806-P-624	806-W-624
4'	30"	806-S-429	806-P-430	806-W-430
5'	30"	806-S-529	806-P-530	806-W-530
6'	30"	806-S-629	806-P-630	806-W-630
4'	36"	806-S-436	806-P-436	806-W-436
5'	36"	806-S-536	806-P-536	806-W-536
6'	36"	806-S-636	806-P-636	806-W-636

# Work Bench Accessories

## TOP SHELF

10" deep; 12" high.

MODEL NO.	LENGTH
6024-4	48"
6024-5	60"
6024-6	72"



## BENCH DRAWERS

Heavy duty welded construction with full extension drawer slides that allow easy operation with heaviest loads. Multi-unit design allows for stacking drawers.

1420	14" W x 20" D x 6" H
------	----------------------



## DRAWER CYLINDER LOCK #3000

Cylinder lock fits all drawers. Furnished with 2 keys and is master keyed.



## STRINGER

Channel shape 5" wide.

MODEL NO.	LENGTH
6010-4	47.25"
6010-5	59.25"
6010-6	71.25"



## LOWER SHELF / FOOT REST

12" deep; 1.625" flange front and back.

MODEL NO.	LENGTH	HEIGHT
6027-4	47.25"	12"
6027-5	59.25"	12"
6027-6	71.25"	12"



## BACK BOARD

Extends 3" above back of bench.

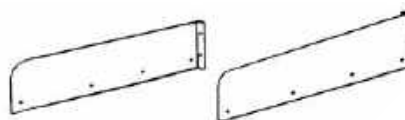
MODEL NO.	LENGTH	HEIGHT
6016-4	48"	4.25"
6016-5	60"	4.25"
6016-6	72"	4.25"



## END PIECES

Furnished in pairs to inter member with back boards.

MODEL NO.	DEPTH	HEIGHT
6020-24	24"	4"
6020-29	29"	4"
6020-36	36"	4"



## PORTABLE WORK BENCH

All Parent 800 Series channel leg benches are available as mobile benches. Casters are heavy duty 5" solid rubber (2 rigid – 2 swivel with brakes). (#ABL - Caster Kit)

## ADJUSTABLE BENCH LEGS

Adjusts on 1" increments, up to 4"

MODEL NO.	DIMENSIONS	
	WIDTH	HEIGHT
8300-21	21"	29" - 33"
8300-28	28.5"	29" - 33"
8300-34	34.5"	29" - 33"
9400-21	21"	33" - 37"
9400-28	28.5"	33" - 37"
9400-34	34.5"	33" - 37"





Shown with top shelf, plastic top, drawer unit, base and channel leg. (Height 32.75")

### High Topshelf (15" DEEP)

MODEL NO.	LENGTH	HEIGHT
H6018	60"	18"
H7218	72"	18"

Ideal for storage of instruments and meters above and below the shelf.

## Modular Benches

- All Box and File Drawers have full extension drawer slides (100% of drawer is accessible) rated at 125 lbs. per drawer.
- Ergonomic drawer pull is an integral part of the drawer front and does not protrude beyond the front of the unit.
- All file drawers have full height sides to accommodate hanging files.
- Locks standard on all units.
- Cabinet is equipped with one adjustable shelf.
- All units furnished with heavy duty leveling glides.
- Choice of finishes available in a durable, long lasting powder coat.
- Available with wood, plastic or anti-static tops.



Shown above with maple top. Sitting height (29.25").

**722 UNITS:**  
14.25" W x 22" D x 27.5" H

**728 UNITS:**  
14.25" W x 27.5" D x 27.5" H

### Base

B-1422 for 722 Series  
B-1428 for 728 Series  
Adds 3.5" to height of unit.



Shown with top shelf, plastic top and apron for bench. Height (34.25")

### Apron

Increases workstation from sitting height (29.25") to bench height (34.25"). Available for benches 60" and 72".

### 722 Series Apron

MODEL NO.	LENGTH	DEPTH
PED6022	56"	22"
PED7222	68"	22"

### 728 Series Apron

MODEL NO.	LENGTH	DEPTH
PED6028	56"	27.5"
PED7228	68"	27.5"



722-C  
728-C

722-BB  
728-BB

722-FF  
728-FF

722-BF  
728-BF

## Locker & Cabinet Bases

- All welded heavy-duty construction.
- Can be used individually or bolted together in groups.
- Locker bases will accept padlock or optional flush mount lock and have spring loaded piano hinges.
- Cabinet bases have full height piano hinges, three point locking handle and one adjustable shelf.
- Choice of finishes in durable, long lasting powder coat.
- Bases shown with optional wood top.

MODEL NO.	SIZE (W x D x H)	OPENINGS (W x D x H)
101-C	36" x 21" x 31"	1- 36" x 21" x 31"
402-B	12" x 21" x 31"	2- 12" x 21" x 15"
303-B	18" x 21" x 31"	3- 18" x 21" x 10"



402-B



303-B



101-C

## Slope Top Wall Cabinets

### 330-1224

Size is 24" wide, 12" deep, 30" high (front) 33" high (back). Equipped with two adjustable shelves, full height piano hinges and chrome plated locking handle. Shipped all welded, set-up.

### 330-1236

Size is 36" wide, 12" deep, 30" high (front) 33" high (back). Otherwise same as above.



## Shop Desks

### #400 Shop Desk

Size is 36" wide, 25" deep, 43" high (front) 51" high (back). Equipped with roomy drawer 24" wide, 22" deep, 4" high and supplied with a cylinder lock. Standard gray finish. Shipped knocked down.



### #401 Wall Mounted Desk

Size is the same as standing model. Saves space by mounting to wall with 2 brackets furnished. Standard gray finish. Shipped knocked down.

### #409 Cabinet Desk Set-Up/All Welded

Heavy Duty All Welded Construction, size is 36" wide x 25" deep x 43" high (front) 51" (rear). Roomy locking Drawer (24" wide x 22" deep x 4" high). Large Cabinet with easily adjustable shelf, three point locking handle and full piano hinges. Standard gray finish.

### #409-C Portable Cabinet Desk

All welded set-up #409 unit with four 5" solid rubber casters, all swivel with brakes.



**All Desks Standard With Full Extension Drawer Slides**



## Mobile Shop Cabinets

- Drawer units and cabinets are heavy-duty all welded.
- Drawers have full extension drawer slides, rated at 125 lbs. per drawer.
- Cabinets have one adjustable shelf.
- 14 Gauge work surface with 3" Back & End stops.
- Flush mounted locks and drawer pulls.
- Powder coated finish.
- Heavy-duty 5" casters (2- rigid, 2- swivel with brakes).
- All units are 29" wide x 22" deep x 34" high.



924-CC



924-CBF



924-BFB

MODEL NO.	DESCRIPTION
924-CC	2- Cabinets
924-CBF	1- Cabinet, 2- 6" Drawers, 1- 12" Drawer
924-BFB	4- 6" Drawers, 2- 12" Drawers

## Shelf Trucks

- Heavy duty construction.
- 13 Gauge Posts.
- Shelves adjust on 1" centers.
- Tubular push handle.
- Heavy Duty 5" solid rubber casters (2 rigid; 2 swivel; brakes optional).
- 12 models available.

MODEL NO.	SIZE (WxD)	TYPE
571-3618	36" x 18"	Open
571-3624	36" x 24"	Open
571-4818	48" x 18"	Open
571-4824	48" x 24"	Open
572-3618	36" x 18"	Closed Ends
572-3624	36" x 24"	Closed Ends
572-4818	48" x 18"	Closed Ends
572-4824	48" x 24"	Closed Ends
573-3618	36" x 18"	Closed Model
573-3624	36" x 24"	Closed Model
573-4818	48" x 18"	Closed Model
573-4824	48" x 24"	Closed Model



**ALL MODELS 57" HIGH.**  
Standard gray finish;  
shipped knocked down.



## Bin Units

### PRE-ASSEMBLED BIN UNITS

These set-up bin units arrive ready for use, just stack and bolt together or use individually. All units are 36" wide and 37.25" high and feature 20 gauge shelves and dividers with rolled front edges that adjust on 1" centers. The most popular combinations are shown below, but the possibilities are endless.



*Great for organizing bench tops or as under counter units!*

CONFIGURATION	MODEL NO.	
	12" DEEP UNITS	18" DEEP UNITS
6 Bins 18" wide x 12" high	BIN-361206	BIN-361806
9 Bins 12" wide x 12" high	BIN-361209	BIN-361809
12 Bins 9" wide x 12" high	BIN-361212	BIN-361812
24 Bins 9" wide x 6" high	BIN-361224	BIN-361824
36 Bins 6" wide x 6" high	BIN-361236	BIN-361836



# Industrial Shelving

- Parent offers the most economical and dependable storage in your factory warehouse or office stockrooms.
- Pick from heavy duty industrial 18 gauge shelves or standard 20 gauge shelves.
- Stocked 36", 42" and 48" wide, 12", 18" and 24" deep and 3'3", 6'3", 7'3", 8'3" and 10'3" high.
- 14 gauge roll formed post used with compression clips. Allows shelf adjustment on 1.5" centers. Front Flange 1" – Side Flange 2".
- Shipped knock-down, stocked in gray polyester finish.
- Other sizes and components available.
- Our most popular units are shown.



**CS-535-18**



**CS-536-12**

## Open Shelving

DEPTH	5-SHELVES MODEL NO.	6-SHELVES MODEL NO.	7-SHELVES MODEL NO.	8-SHELVES MODEL NO.
<b>36" WIDE x 7'3" HIGH</b>				
<b>Starting Units</b>				
12"	CS-535-12	CS-635-12	CS-735-12	CS-835-12
18"	CS-535-18	CS-635-18	CS-735-18	CS-835-18
24"	CS-535-24	CS-635-24	CS-735-24	CS-835-24
<b>Add-On Units</b>				
12"	CA-535-12	CA-635-12	CA-735-12	CA-835-12
18"	CA-535-18	CA-635-18	CA-735-18	CA-835-18
24"	CA-535-24	CA-635-24	CA-735-24	CA-835-24
<b>48" WIDE x 7'3" HIGH</b>				
<b>Starting Units</b>				
12"	CS-547-12	CS-647-12	CS-747-12	CS-847-12
18"	CS-547-18	CS-647-18	CS-747-18	CS-847-18
24"	CS-547-24	CS-647-24	CS-747-24	CS-847-24
<b>Add-On Units</b>				
12"	CA-547-12	CA-647-12	CA-747-12	CA-847-12
18"	CA-547-18	CA-647-18	CA-747-18	CA-847-18
24"	CA-547-24	CA-647-24	CA-747-24	CA-847-24

## Closed Shelving

DEPTH	5-SHELVES MODEL NO.	6-SHELVES MODEL NO.	7-SHELVES MODEL NO.	8-SHELVES MODEL NO.
<b>36" WIDE x 7'3" HIGH</b>				
<b>Starting Units</b>				
12"	CS-536-12	CS-636-12	CS-736-12	CS-836-12
18"	CS-536-18	CS-636-18	CS-736-18	CS-836-18
24"	CS-536-24	CS-636-24	CS-736-24	CS-836-24
<b>Add-On Units</b>				
12"	CA-536-12	CA-636-12	CA-736-12	CA-836-12
18"	CA-536-18	CA-636-18	CA-736-18	CA-836-18
24"	CA-536-24	CA-636-24	CA-736-24	CA-836-24
<b>48" WIDE x 7'3" HIGH</b>				
<b>Starting Units</b>				
12"	CS-548-12	CS-648-12	CS-748-12	CS-848-12
18"	CS-548-18	CS-648-18	CS-748-18	CS-848-18
24"	CS-548-24	CS-648-24	CS-748-24	CS-848-24
<b>Add-On Units</b>				
12"	CA-548-12	CA-648-12	CA-748-12	CA-848-12
18"	CA-548-18	CA-648-18	CA-748-18	CA-848-18
24"	CA-548-24	CA-648-24	CA-748-24	CA-848-24



## Open Folder Shelving Units

Parent shelving can be used for open folder filing systems as shown. This application allows quick access to a large number of records.

Economical shelving keeps total system cost at a minimum without compromising accessibility. Use of intermediate partitions allows removal of files without disturbing adjacent folders.

## Bin Units

Steel Bin Units shown are 36" wide x 7'3" high with closed sides, backs & bases. Units can be furnished 12", 18" and 24" deep.

Illustrated are just a few of the many variations of *Parent Shelving Units*.



### Unit #24

Number of Bins: 21  
12" W x 12"H



### Unit #14

Number of Bins: 20  
12 – 9" W x 12" H  
8 – 18" W x 12" H



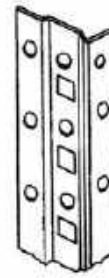
### Unit #13

Number of Bins: 36  
32 – 9" W x 9" H  
4 – 9" W x 12" H

# Shelving Components

## OFFSET ANGLE POST

14 Gauge roll formed post used with compression clips. Allows shelf adjustment on 1.5" centers. Front flange 1"—Side flange 2".



## BOX POST

14 Gauge roll formed post used with compression clips. (1.5" adjustment). Box design allows full access of entire shelf, excellent for archive storage. Front flange .5"—Side flange 2".



## SHELF CLIP

Heavy gauge compression clip. Used to provide easy shelf adjustment.



## Bin Dividers

MODEL NO.	SIZE (D x H)
SBD-1206	12" x 6"
SBD-1209	12" x 9"
SBD-1212	12" x 12"
SBD-1218	12" x 18"
SBD-1806	18" x 6"
SBD-1809	18" x 9"
SBD-1812	18" x 12"
SBD-1818	18" x 18"
SBD-2406	24" x 6"
SBD-2409	24" x 9"
SBD-2412	24" x 12"
SBD-2418	24" x 18"

**Bin divider attachment hole on 1" centers.**

**1.25"**

**1.25"**

**Double flange sides.**

**Triple Flanged Front and Rear. No Sharp Edges.**

**Standard shelf with a 1" x 1" reinforcing angle in front flange.**

## STANDARD SHELF

## Shelving Capacity Chart

	CLASS 0 (No Angles)		CLASS 1 (1-Angle)		CLASS 2 (2-Angles)	
	20 Gauge	18 Gauge	20 Gauge	18Gauge	20 Gauge	18 Gauge
36 x 12	425	650	625	750	750	925
36 x 18	425	650	625	750	750	925
36 x 24	425	650	625	750	750	925
36 x 30	-	600	-	700	-	800
36 x 36	-	600	-	700	-	800
42 x 12	375	500	475	550	550	725
42 x 18	375	500	475	550	550	725
42 x 24	375	500	475	550	550	725
42 x 30	-	450	-	500	-	675
42 x 36	-	450	-	500	-	675
48 x 12	325	425	425	500	500	650
48 x 18	325	425	425	500	500	650
48 x 24	325	425	425	500	500	650
48 x 30	-	350	-	375	-	550
48 x 36	-	350	-	375	-	550

### NOTE:

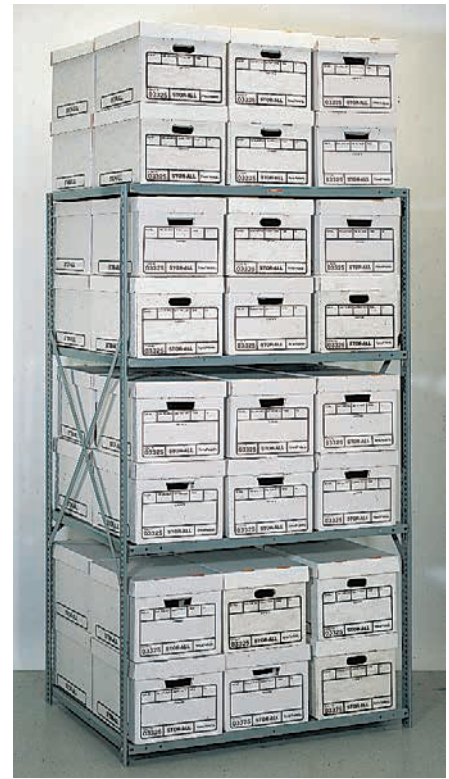
1. These capacities are for evenly distributed static loads.
2. Consult factory sales personnel for higher capacities.
3. To gain maximum capacity rebars must be bolted to posts.

## Record Storage Units

- Economical high density record storage. Maximize use of storage space!
- Modular units allow quick access to all stored records.
- Easy assembly! Sets up fast for years of service.
- Add on units install without disturbing existing units.
- Units for single or double depth and height storage boxes.
- High quality, long wearing polyester finish.
- 42" wide, 18 or 20 gauge shelves standard on all units.
- Box posts allow full access of shelf.



BS-741-186



BS-441-326

	DOUBLE DEPTH • 32" DEEP		SINGLE DEPTH • 18" DEEP	
6'3" TALL UNITS	4 SHELF (Double Height)	7 SHELF (Single Height)	4 SHELF (Double Height)	7 SHELF (Single Height)
Model No.	BS-441-326	BS-741-326	BS-441-186	BS-741-186
Number of boxes	48	42	24	21
Add on Model No.	BA-441-326	BA-741-326	BA-441-186	BA-741-186
8'3" TALL UNITS	5 SHELF (Double Height)	9 SHELF (Single Height)	5 SHELF (Double Height)	9 SHELF (Single Height)
Model No.	BS-541-328	BS-941-328	BS-541-188	BS-941-188
Number of boxes	60	54	30	27
Add on Model No.	BA-541-328	BA-941-328	BA-541-188	BA-941-188

Configuration varies by weight of loaded boxes and frequency of access. Consult factory for other sizes and configurations.



PC-3185

## PC Shelving

These individually packed units are ideal for general storage. An economical solution that provides easy access to all items. They assemble in a matter of minutes and the intermediate shelves adjust on clips.

MODEL NO.	W x D x H
PC-3125	36" x 12" x 75"
PC-3185	36" x 18" x 75"
PC-3245	36" x 24" x 75"

# Economical Storage for Large, Bulky Items

- Access from all four sides.
- Beams adjust on 1.5" centers.
- Posts & Beams are 14 gauge with gray polyester finish.
- Beams easily snap into posts as shown.
- Standard duty or heavy duty units.
- Use tie plates for continuous rows.
- Available with galvanized steel decking.
- All units standard with four levels.



Beams easily snap into posts as shown above.



Particle board decking is also available from any lumber yard or home center.



## STANDARD DUTY WITHOUT STEEL DECKING

MODEL NO.	SIZE (W x D x H)	CAP. PER LEVEL
SRA-4524	60" x 24" x 84"	1200 lbs.
SRA-4530	60" x 30" x 84"	1200 lbs.
SRA-4536	60" x 36" x 84"	1200 lbs.
SRA-4542	60" x 42" x 84"	1200 lbs.
SRA-4548	60" x 48" x 84"	1200 lbs.
SRA-4624	72" x 24" x 84"	1000 lbs.
SRA-4630	72" x 30" x 84"	1000 lbs.
SRA-4636	72" x 36" x 84"	1000 lbs.
SRA-4642	72" x 42" x 84"	1000 lbs.
SRA-4648	72" x 48" x 84"	1000 lbs.
SRA-4824	96" x 24" x 84"	620 lbs.
SRA-4830	96" x 30" x 84"	620 lbs.
SRA-4836	96" x 36" x 84"	620 lbs.
SRA-4842	96" x 42" x 84"	620 lbs.
SRA-4848	96" x 48" x 84"	620 lbs.

## STANDARD DUTY WITH STEEL DECKING

MODEL NO.	SIZE (W x D x H)	CAP. PER LEVEL
SRA-4524-SD	60" x 24" x 84"	1200 lbs.
SRA-4530-SD	60" x 30" x 84"	1200 lbs.
SRA-4536-SD	60" x 36" x 84"	1200 lbs.
SRA-4542-SD	60" x 42" x 84"	1200 lbs.
SRA-4548-SD	60" x 48" x 84"	1200 lbs.
SRA-4624-SD	72" x 24" x 84"	1000 lbs.
SRA-4630-SD	72" x 30" x 84"	1000 lbs.
SRA-4636-SD	72" x 36" x 84"	1000 lbs.
SRA-4642-SD	72" x 42" x 84"	1000 lbs.
SRA-4648-SD	72" x 48" x 84"	1000 lbs.
SRA-4824-SD	96" x 24" x 84"	620 lbs.
SRA-4830-SD	96" x 30" x 84"	620 lbs.
SRA-4836-SD	96" x 36" x 84"	620 lbs.
SRA-4842-SD	96" x 42" x 84"	620 lbs.
SRA-4848-SD	96" x 48" x 84"	620 lbs.

## HEAVY DUTY WITHOUT STEEL DECKING

MODEL NO.	SIZE (W x D x H)	CAP. PER LEVEL
SRC-4524	60" x 24" x 84"	1750 lbs.
SRC-4530	60" x 30" x 84"	1750 lbs.
SRC-4536	60" x 36" x 84"	1750 lbs.
SRC-4542	60" x 42" x 84"	1750 lbs.
SRC-4548	60" x 48" x 84"	1750 lbs.
SRC-4624	72" x 24" x 84"	1500 lbs.
SRC-4630	72" x 30" x 84"	1500 lbs.
SRC-4636	72" x 36" x 84"	1500 lbs.
SRC-4642	72" x 42" x 84"	1500 lbs.
SRC-4648	72" x 48" x 84"	1500 lbs.
SRC-4824	96" x 24" x 84"	1000 lbs.
SRC-4830	96" x 30" x 84"	1000 lbs.
SRC-4836	96" x 36" x 84"	1000 lbs.
SRC-4842	96" x 42" x 84"	1000 lbs.
SRC-4848	96" x 48" x 84"	1000 lbs.

## HEAVY DUTY WITH STEEL DECKING

MODEL NO.	SIZE (W x D x H)	CAP. PER LEVEL
SRC-4524-SD	60" x 24" x 84"	1750 lbs.
SRC-4530-SD	60" x 30" x 84"	1750 lbs.
SRC-4536-SD	60" x 36" x 84"	1750 lbs.
SRC-4542-SD	60" x 42" x 84"	1750 lbs.
SRC-4548-SD	60" x 48" x 84"	1750 lbs.
SRC-4624-SD	72" x 24" x 84"	1500 lbs.
SRC-4630-SD	72" x 30" x 84"	1500 lbs.
SRC-4636-SD	72" x 36" x 84"	1500 lbs.
SRC-4642-SD	72" x 42" x 84"	1500 lbs.
SRC-4648-SD	72" x 48" x 84"	1500 lbs.
SRC-4824-SD	96" x 24" x 84"	1000 lbs.
SRC-4830-SD	96" x 30" x 84"	1000 lbs.
SRC-4836-SD	96" x 36" x 84"	1000 lbs.
SRC-4842-SD	96" x 42" x 84"	1000 lbs.
SRC-4848-SD	96" x 48" x 84"	1000 lbs.

# Industrial Boltless Shelving

Designed For Fast, Easy "Boltless" Assembly

- Steel shelves just drop into place (4 per unit).
- Access from all four sides without any cross bracing.
- Components snap together without any nuts, bolts or clips.
- Posts and beams are 14 gauge with a gray polyester finish.
- Shelves adjust on 1.5" centers.
- All units 72" high (so top shelf is accessible).



Single Rivet Unit

Double Rivet Unit



Blue • Black • ASA 49 Gray • Lt. Gray • Champagne

## Standard Duty (Single Rivet)

MODEL NO.	SIZE (W x D x H)	CAPACITY/SHELF
SRB-4318-SH	36" x 18" x 72"	600 #'s
SRB-4324-SH	36" x 24" x 72"	600 #'s
SRB-4330-SH	36" x 30" x 72"	600 #'s
SRB-4418-SH	48" x 18" x 72"	500 #'s
SRB-4424-SH	48" x 24" x 72"	500 #'s
SRB-4430-SH	48" x 30" x 72"	500 #'s

## Heavy Duty (Double Rivet)

MODEL NO.	SIZE (W x D x H)	CAPACITY/SHELF
SRA-4318-SH	36" x 18" x 72"	1200 #'s
SRA-4324-SH	36" x 24" x 72"	1200 #'s
SRA-4330-SH	36" x 30" x 72"	1200 #'s
SRA-4418-SH	48" x 18" x 72"	1000 #'s
SRA-4424-SH	48" x 24" x 72"	1000 #'s
SRA-4430-SH	48" x 30" x 72"	1000 #'s

## Paint Schedule

COLOR	SHELVING STOCK CARTS	STORAGE CABINETS	BOOKCASES	INDUSTRIAL FURNITURE SHOP EQUIPMENT	DESKS	LOCKERS
ASA 49 Gray	✓	—	—	✓	•	—
Light Gray	—	✓	✓	•	•	✓
Champagne	—	✓	✓	•	•	—
Blue	—	✓	✓	•	•	—
Black	—	✓	✓	•	•	—

✓ Most items available from quick ship • Available from production schedule — Consult Factory

## PARENT METAL PRODUCTS

1345 Bridgewater Road  
Bensalem, PA 19020

Phone: 215.244.7800

800.523.3444

Fax: 215.244.4468

www.parentmetal.com

